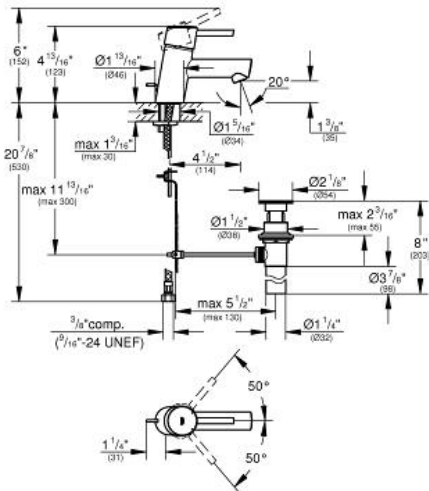


CONCETTO  
Single Lever Faucet XS size  
MODEL # 34702001

Pure Freude an Wasser



GROHE America, Inc | 200 North Gary Avenue, Suite G, Roselle, IL 60172  
Phone: +1 (800) 444-7643 | Fax: +1 (800) 225-2778 | us-customerservice@grohe.com



ADA

**Product Description:**  
Single Lever Faucet XS size

**Standard Specification:**

- GROHE SilkMove 28 mm ceramic cartridge
- With adjustable hot limit safety stop
- GROHE StarLight® finish
- GROHE EcoJoy® technology for less water and perfect flow
- GROHE QuickFix® installation system
- Metal lever handle
- Metal pop-up drain
- Extra long flex lines with flat seal
- Faucet height below 6" when in use
- Solid brass body
- Max flow rate: 1.2 gpm (4.56 L/min)
- ADA Compliant

**Applicable Codes & Standards:**

- EPA WaterSense®
- CalGreen

**Color:**

- 34702001 001 chrome

